



# Course Registration Procedures



You can complete most of the registration procedures from anywhere that has internet access.

## <<SCHEDULES>>

1. Course Registration via the Web

**For students enrolled in 2018** (The 3<sup>rd</sup> and 4<sup>th</sup> digits of the student number are “18”)

**September 12 (Thu) 9:00 a.m. - September 20 (Fri) 6:00 p.m., 2019**

**For students enrolled in/before 2017** (The 3<sup>rd</sup> and 4<sup>th</sup> digits of the student number are “17” and fewer)

**September 13 (Fri) 9:00 a.m. – September 24 (Tue) 6:00 p.m., 2019**

2. Registration Confirmation via the Web (1st)

**September 27 (Fri) 9:00 a.m. - October 9 (Wed) 6:00 p.m., 2019**

3. Registration Revision [addition and/or cancellation] via the Web

**October 2 (Wed) 9:00 a.m. - October 9 (Wed) 6:30 p.m., 2019**

To register for courses additionally, you need to submit a “Registration Application Form” to the instructor in the first class of the course, and make sure to register for the course via the system by yourself as well.

Registration Application Form

Day	Period	Registration Code	Course Title	Instructor's Name
School		Program		Name
Student Number				

4. Registration Confirmation via the Web (2nd)

**October 25 (Fri) 9:00 a.m. - October 30 (Wed) 6:00 p.m., 2019**

You must complete the course registration by the designated day.

**It is strongly recommended to finish registrations by the day before the deadline to avoid busy network hours.**

\*\*\*\*\*

**Course Registration URL: <https://portal.nagoya-u.ac.jp>**

Operation Manual URL: <http://web-honbu.jimu.nagoya-u.ac.jp/gakumu/gakumubu/student/e/index.htm>

(Contact Information for Inquiries)

**Nagoya University ID:** Information Media Office (School of Engineering Bldg. 7, 4F)




\*takes two days to respond.

**System Operation:** Student Affairs Planning Division




## Contact Information for Course Registration

- For Liberal Arts and Sciences Courses (The registration codes starting with "00"):
  - Institute of Liberal Arts and Sciences Office (hereinafter referred to as ILAS Office)
  - [Office Hours] 8:30 a.m. - 5:00 p.m. on weekdays
  - Until October 1: Closed during lunch time (12:00 p.m. - 1:00 p.m.)
  - After October 2: Open during the office hour above including the lunch time
- For School Specific Courses (Registration codes starting without "00"):
  - Student Affairs Section of each School

## Related Website URLs

Website Name and the URL	QR
Nagoya University Portal ※Learning Management System (English ver.) can be accessed from here. <a href="https://portal.nagoya-u.ac.jp">https://portal.nagoya-u.ac.jp</a>	
Learning Management System -Student Manual- <a href="http://web-honbu.jimu.nagoya-u.ac.jp/gakumu/gakumubu/student/e/index.htm">http://web-honbu.jimu.nagoya-u.ac.jp/gakumu/gakumubu/student/e/index.htm</a>	
Information Security Self-Inspection Instructions <a href="https://ist.nagoya-u.ac.jp/access/content/group/si/selfins_en">https://ist.nagoya-u.ac.jp/access/content/group/si/selfins_en</a>	

## Contact Information for the Other Inquiries

Information Security Training/Information Security Self-Inspection IT Help Desk Email: <a href="mailto:it-helpdesk@icts.nagoya-u.ac.jp">it-helpdesk@icts.nagoya-u.ac.jp</a>	
Nagoya University ID and PW 【takes two days to respond】 Information Media Office (School of Engineering Building 7, 4F) Email: <a href="mailto:e-office@media.nagoya-u.ac.jp">e-office@media.nagoya-u.ac.jp</a>	
Web-Based System Operation Student Affairs Planning Division Email: <a href="mailto:gakumu-support@adm.nagoya-u.ac.jp">gakumu-support@adm.nagoya-u.ac.jp</a>	

---

---

# Table of Contents

---

---

<b>Related Website URLs and Contact Information</b> .....	<b>1</b>
<b>I. Course Registration Procedures</b> .....	<b>3</b>
1. Syllabus	
2. Computing Sites on Campus	
3. “Course Registration” Web Entry Period	
4. Registration Application Form	
5. GPA (Grade Point Average) System and Handling of Grade Assessment (“Absent” and “Fail (F)”)	
6. Contact Information of Senior Instructors for each Language	
<b>II. Course Registration Process</b> .....	<b>6</b>
<b>III. How to Register for Courses</b> .....	<b>7</b>
<b>IV. Registration Procedures for Each Course</b> .....	<b>9</b>
◇ Basic General Education Courses : “First Year Seminar A”	
◇ Basic General Education Courses : Language and Culture I “Academic English Advanced 1 / 3”	
◇ Basic General Education Courses: Language and Culture I and II Advanced Japanese and Languages except English	
◇ Basic General Education Courses: Language and Culture I “Integrated Japanese 1”, “Japanese Language Seminar 1”, “Academic Japanese I/III/V”, “Business Japanese I/III”, Open Courses	
◇ Basic General Education Courses: “Health and Sports Science: Practicum (Exercise and Sports II)”	
◇ Basic Courses in Humanities and Social Sciences, Basic Courses in Natural Sciences, Liberal Education Courses in Humanities and Social Sciences, Liberal Education Courses in Natural Sciences, Liberal Education Courses in Interdisciplinary Fields, Basic General Education Courses: “Health and Sports Science: Lecture”	
<b>V. Confirmation and Revision of Registered Courses</b> .....	<b>15</b>
1. Registration Confirmation	
2. Class Enrollment Check- Errors and Correction Methods	
3. Examples	
<b>Registration Application Form</b>	

---

---

\*Refer to other booklets such as “Liberal Arts and Sciences Class Timetable and Syllabus for International Programs Fall Semester, 2019”, “Liberal Arts and Sciences Course Registration Guide for International Programs Students” and “Student Handbook” for course registration.

## I. Course Registration Procedures

Course registration is available through the Learning Management System which is accessible via the NU Portal (<https://portal.nagoya-u.ac.jp>).

You can access to the NU Portal from anywhere, both on and off campus using a computer connected to the Internet after authenticated with your Nagoya University ID.

Proceed to the Learning Management System, and register for courses following the instructions for each course.

### 1. Syllabus

Check the latest syllabi posted on the ILAS website since the latest information on the booklet “Liberal Arts and Sciences Class Timetable and Syllabus for International Programs” may be revised.

ILAS website: <http://www.ilas.nagoya-u.ac.jp/>

To see the syllabi, select “【Fall Semester AY2019】 Course Registration Procedures for International Programs” posted on “What’s New”.

For foreign language courses, access to the URL written in each syllabus.

### 2. Computing Sites on Campus

You can use the computers located on campus such as in the Information Media Center Laboratory and in the Sub-Lab rooms on the 2nd floor of the Liberal Arts and Sciences building for course registration.

Sub-Lab rooms are available during the period below. Please check the notice on the bulletin board on the 1st floor of the ILAS building since it may not be possible to use the rooms for various reasons such as the maintenance. For other computer locations, follow the directions of each administration office.

Sub-Lab Rooms Available Hours during the Registration Period (closed on weekend and holidays)

【September 12(Thu) – 20(Fri)】 9:00 a.m. - 4:00 p.m. (Only Sub-lab room B is open.)

【On and After October 2(Wed)】 8:45 a.m. – 7:30 p.m.

#### Media Satellite Laboratories on Campus

Higashiyama Campus	<ul style="list-style-type: none"><li>➤ Liberal Arts &amp; Sciences Building: Sub-lab Room A and B</li><li>➤ Integrated Research Building for Humanities and Social Sciences: Rooms 304 and 406</li><li>➤ School of Science Building A: Room 250</li><li>➤ ES Building, ES031, ES032 and School of Engineering Building7: Room 716</li><li>➤ School of Agricultural Sciences, Building B: Room 309, 327</li><li>➤ Graduate School of International Development Building: Room712</li><li>➤ Central Library 4F</li></ul>
Tsurumai Campus	Medical Research Building: Annex 2F
Daiko Campus	School of Health Sciences, Main Building: Information Media Room (1)

### 3. “Course Registration” Web Entry Period

The “Course Registration” period in this Fall Semester is indicated on the front page of this booklet.

Access to the NU portal, enter the Learning Management System, and register for courses by yourself.

Please note that the web registration can be done only during the designated period.

We recommend you to print out the screen image after you click “Register” and check it with “Check enrolled class”.

Notes:

You can register for courses at any time during the “Course Registration” and “Registration Revision” period, except for maintenance time (4:00 a.m. - 5:00 a.m., 6:00 p.m. - 7:00 p.m.).

※The system is normally available from 6:00 p.m. to 7:00 p.m., however, inputting data will be unavailable when maintenance is held.

#### 4. Registration Application Form

“Registration Application Form” must be submitted to the instructor on the first day of the course in Registration Revision Period (October 2 (Wed) - 9 (Wed)) after obtaining the instructor’s permission. The forms are attached to the end of this booklet. If you need more forms, they are available at the ILAS Office.

**MAKE SURE to register for courses online** within the registration period after submitting a “Registration Application Form” to the instructor. **Even if you submit the form to the instructor, course registration will not be completed if you do not register for the course online.**

(Sample)

Registration Application Form										
Day	Period	Registration Code	Course Title				Instructor’s Name			
School					Program			Name		
Student Number										

#### 1. GPA (Grade Point Average) System and Handling of Grade Assessment (“Absent” and “Fail (F)”)

Nagoya University employs GPA, Grade Point Average system based on the five letter grades: S-A-B-C-F. According to the GPA system, a grade of “F” (Fail) results in 0 points and lowers the GPA; however, “Absent” does not affect the GPA. Therefore, the difference between a grade of “F” and “Absent” is significant as it strongly affects your GPA.

Nagoya University has introduced the course withdrawal system. For the details, refer to the “Liberal Arts and Sciences Course Registration Guide for International Programs Students”

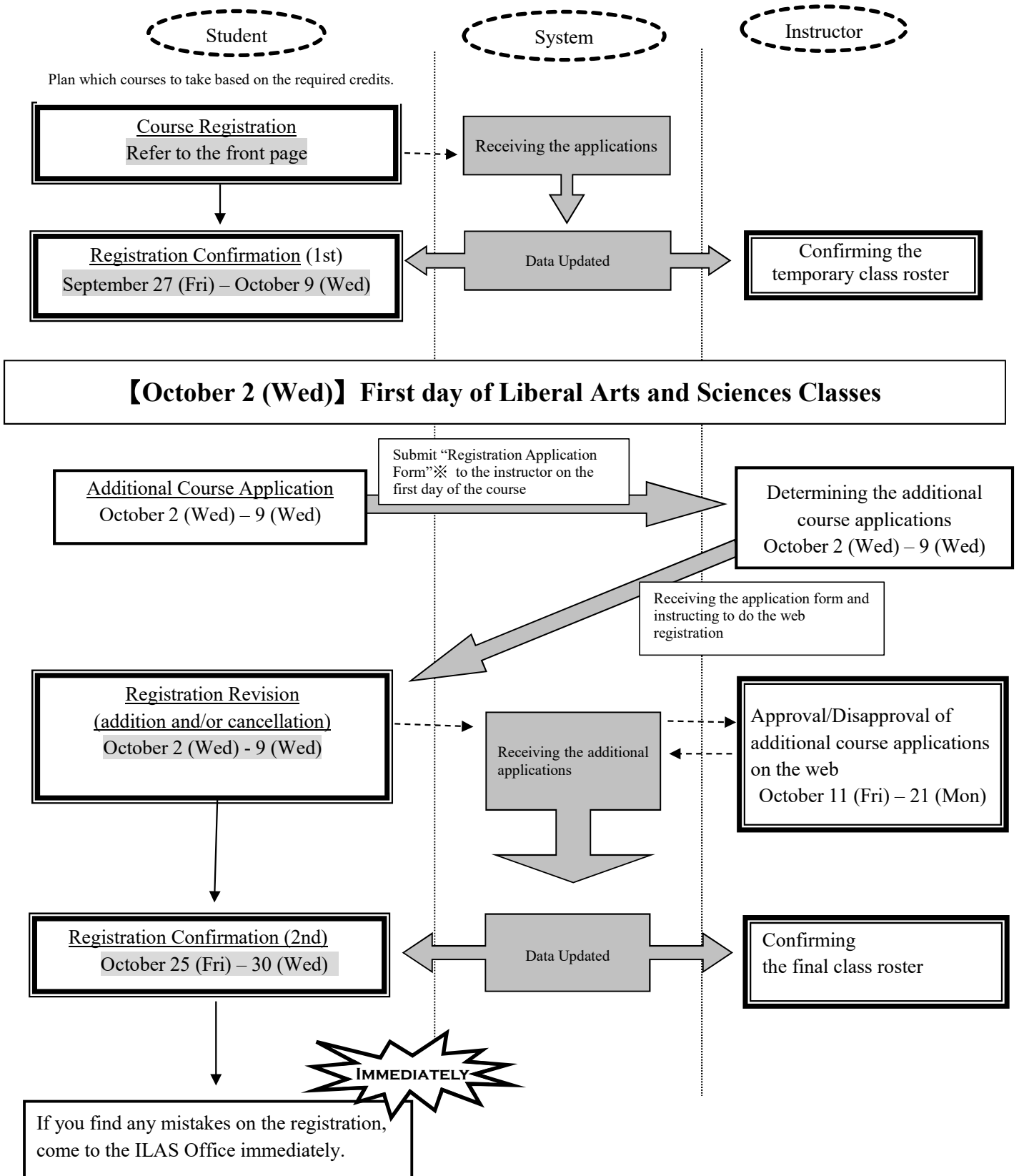
“Course Withdrawal Form” for Liberal Arts and Sciences courses can be obtained at the ILAS Office. The submission period is from October 11 (Fri) to the end of November in this semester, however, it might vary depending on the courses so please check the course syllabus or inquire the instructor directly about the deadline.

## 5. Contact Information of Senior Instructors for each Language

Language	Instructor	Contact
German	FUJII	Office: Integrated Research Building for Humanities and Social Sciences, 7F, Room 710 Phone: 052-789-4796 / Email: tagiru.fujii@nagoya-u.ac.jp
French	OGURISU	Office: Integrated Research Building for Humanities and Social Sciences, 5F, Room 507 Phone: 052-789-5351 / Email: ogurusu.hitoshi@j.mbox.nagoya-u.ac.jp
Russian	SAVELIEV	Office: Graduate School of International Development Building, 7F, Room 705 Phone: 052-789-4396 / Email: saveliev@gsid.nagoya-u.ac.jp
Chinese	MARUO	Office: Integrated Research Building for Humanities and Social Sciences , 6F, Room 601 Phone: 052-789-5702 / Email: maruo.makoto@e.mbox.nagoya-u.ac.jp
Spanish	SHIBA	Office: Liberal Arts and Sciences Main Building, North Wing, 4F, Room 402 Phone: 052-789-4349 / Email: a-shiba@nagoya-u.ac.jp
Korean	UTSUGI	Office: Liberal Arts and Sciences Main Building, North Wing, 2F, Room 204 Phone: 052-789-4989 / Email: utsugi@nagoya-u.ac.jp
Japanese	TOKUHIRO	Office: International Education & Exchange Center, 3F, Room 304 Phone: 052-747-6557 / Email: tokuhiro@iee.nagoya-u.ac.jp
	HAIKANO	Office: International Education & Exchange Center, 3F, Room 303 Phone: 052-747-6542 / Email: hajikano@iee.nagoya-u.ac.jp

\*About credits required for graduation, please consult with the school you belong to.

## II. Course Registration Process



※"Registration Application Form" is available at the ILAS Office.

If you do not complete the registration, you will not be given a grade of the course.

### III. How to Register for Courses

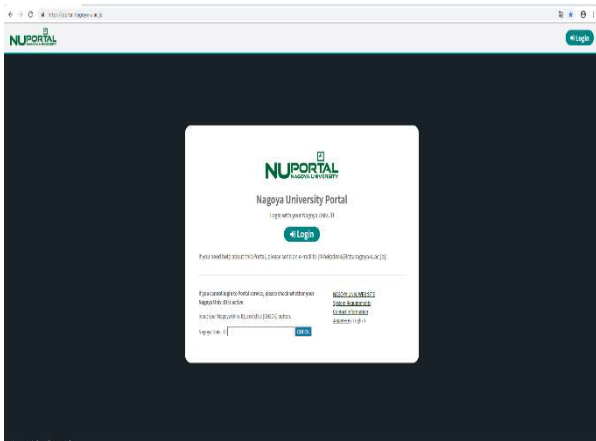
Please follow “Learning Management System -Student Manual-” below. (<http://web-honbu.jimu.nagoya-u.ac.jp/gakumu/gakumubu/student/e/index.htm>)

Keep your Nagoya University user ID and password safe since they are used to protect personal information. You can login to the system by entering the Nagoya University User ID on the Nagoya University Portal from an Internet browser.

<https://portal.nagoya-u.ac.jp>

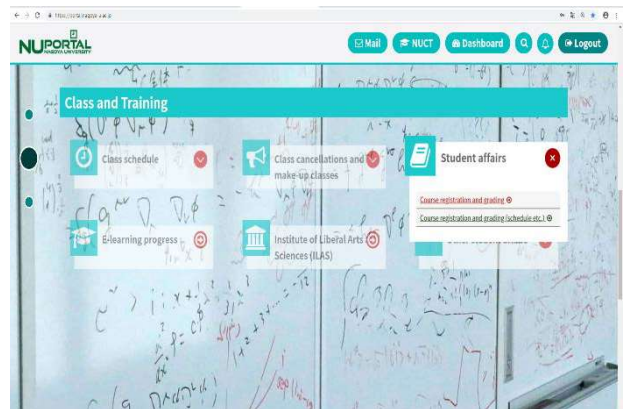
#### (1) Login

Enter your NU ID and password to login.



#### (2) “Student Affairs” Tab

“Learning Management System” is in “Course registration and grading (schedule etc.)”.



#### (3) Class Enrollment Procedure Menu

The number of each button is corresponding to the numbers on the appended table on the next page.

**Nagoya University Class Enrollment Procedure Menu**

---

Confirming enrolled classes and completed courses

<p>Check enrolled classes</p> <p><a href="#">Nov 7 to Feb 10</a></p>	<p>Check completed courses</p> <p><a href="#">Sep 5 to Feb 15</a></p>
--	---

Registering class enrollments

<p><b>1</b> Register class enrollments</p>	<p><b>2</b> Register intensive class enrollments</p>	<p>Register special course enrollments</p>
--	--	--

Correcting class enrollments (additions and/or cancellations)

<p><b>3</b> Correct class enrollments</p>	<p><b>4</b> Correct intensive class enrollments</p>	<p>Correct special course enrollments</p>
---	---	---

Registering controlled enrollment classes

<p>Register first year seminar enrollment</p>	<p>Register English class enrollment</p>	<p>Register information literacy enrollment</p>
<p>Register foreign language class preference (other than English)</p>		

\*See Student Manual

**End**



◇Categories of the Class Enrollment Procedure Menu and Corresponding Courses

Please refer to the categories below and enter the data via appropriate category.

Be careful of the categories since **the registration via wrong category will be invalid.**

**(Appended Table)**

Category Name	Corresponding Courses		Data Entry Period
① Register class enrollments	Liberal Arts and Sciences Courses	Basic Courses in Humanities and Social Sciences	1) Students enrolled in 2018 <b>September 12 (Thu) 9:00 a.m.- September 20 (Fri) 6:00p.m.</b> 2) Students enrolled in/before 2017 <b>September 13 (Fri) 9:00 a.m. – September 24 (Tue) 6:00 p.m.</b>
		Basic Courses in Natural Sciences	
		Liberal Education Courses in Humanities and Social Sciences	
		Liberal Education Courses in Natural Sciences	
		Liberal Education Courses in Interdisciplinary Fields	
	Health and Sports Science: Lecture Academic English Advanced 1 / 3		
	Specialized Courses for each school (for details, follow the directions of each school)		
② Register intensive class enrollments	Special Mathematics Lecture (Introduction to Functional Analysis)		
③ Correct class enrollments	Liberal Arts and Sciences Courses	First Year Seminar A ※1	<b>October 2 (Wed) 9:00 a.m. – October 9 (Wed) 6:30 p.m.</b>
		Languages except English ※2	
		Health and Sports Science: Practicum	
		Open Courses	
	Courses to add or delete for such reasons as registration mistake.		
Specialized Courses for each school (for details, follow the directions of each school)			
④ Correct intensive class enrollments	<ul style="list-style-type: none"> <li>• Academic Japanese I / III / V</li> <li>• Business Japanese I ※2</li> <li>• Courses of ② above to add or delete due to registration mistake etc.</li> </ul>		

※1 The maximum number of students for First Year Seminar is 12 per class. If you wish to take the course, check **the list of available classes** (see p.9 for more details).

※2 “Business Japanese III” should be registered via ④ “Correct class enrollments”.

## IV. Registration Procedures for Each Course

### Basic General Education Courses: "First Year Seminar A"

Check the **list of available classes** which will be posted on the bulletin board of the ILAS main building 1F from **October 2** and choose a class to register.

✘ You cannot take the courses which are not on the list.

"Registration Application Form" is available at the ILAS Office.

Registration Application Form				
Day	Period	Registration Code	Course Title	Instructor's Name
School		Program		Name
Student Number				

Attend the first class and submit the "Registration Application Form" to the instructor after obtaining permission from the instructor.

Be sure to print out the registration page!!



#### Registration Revision

October 2 (Wed) - 9 (Wed)

Click the "Correct class enrollments" button. Select an appropriate day and period and click the "Register" button.

#### Registration Confirmation (2nd)

October 25 (Fri) - 30 (Wed)

Click the "Check enrolled classes" button.

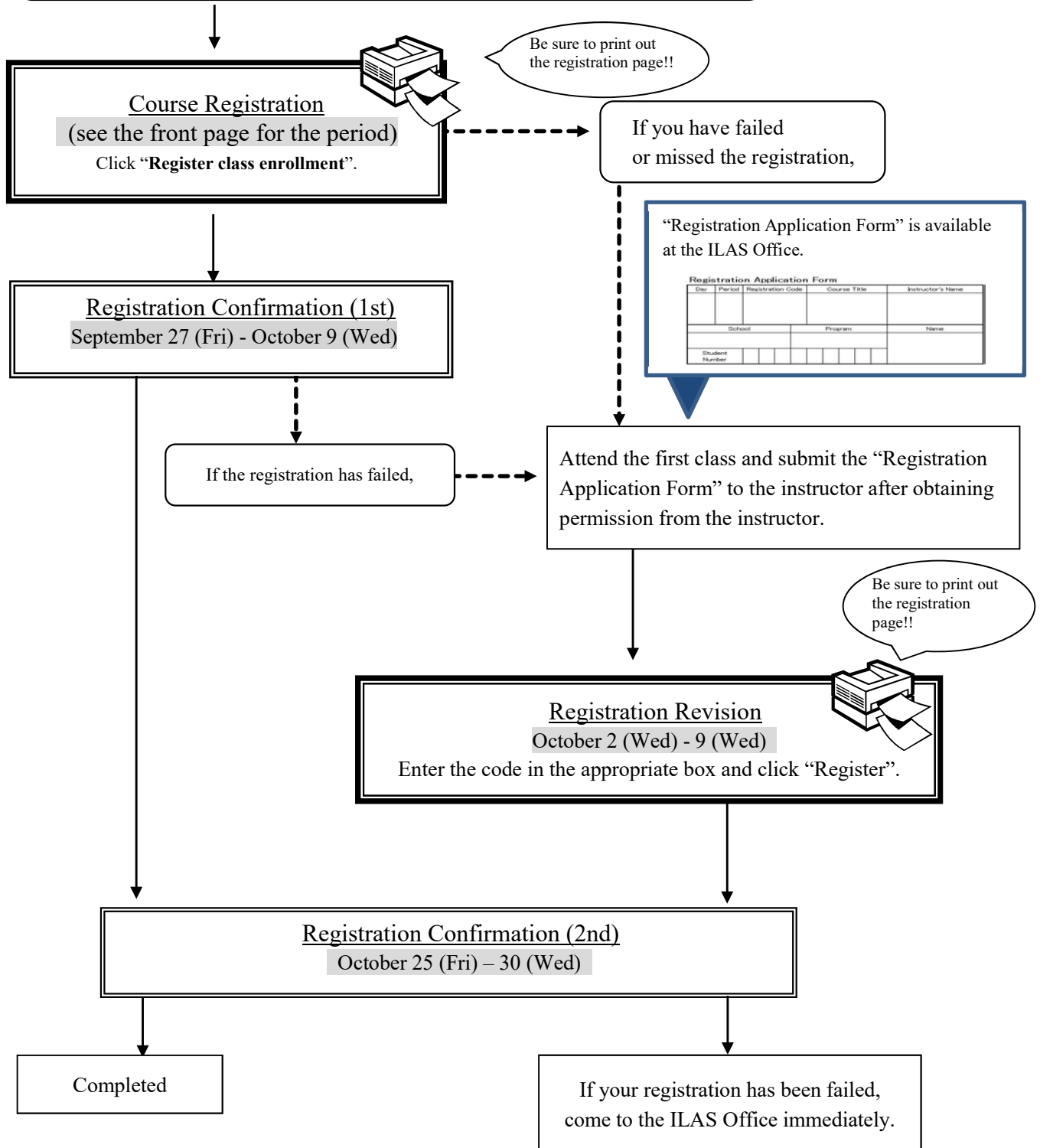
Completed

If your registration has been failed, come to the ILAS Office immediately.

**Basic General Education Courses: Language and Culture I  
“Academic English Advanced 1 / 3”**

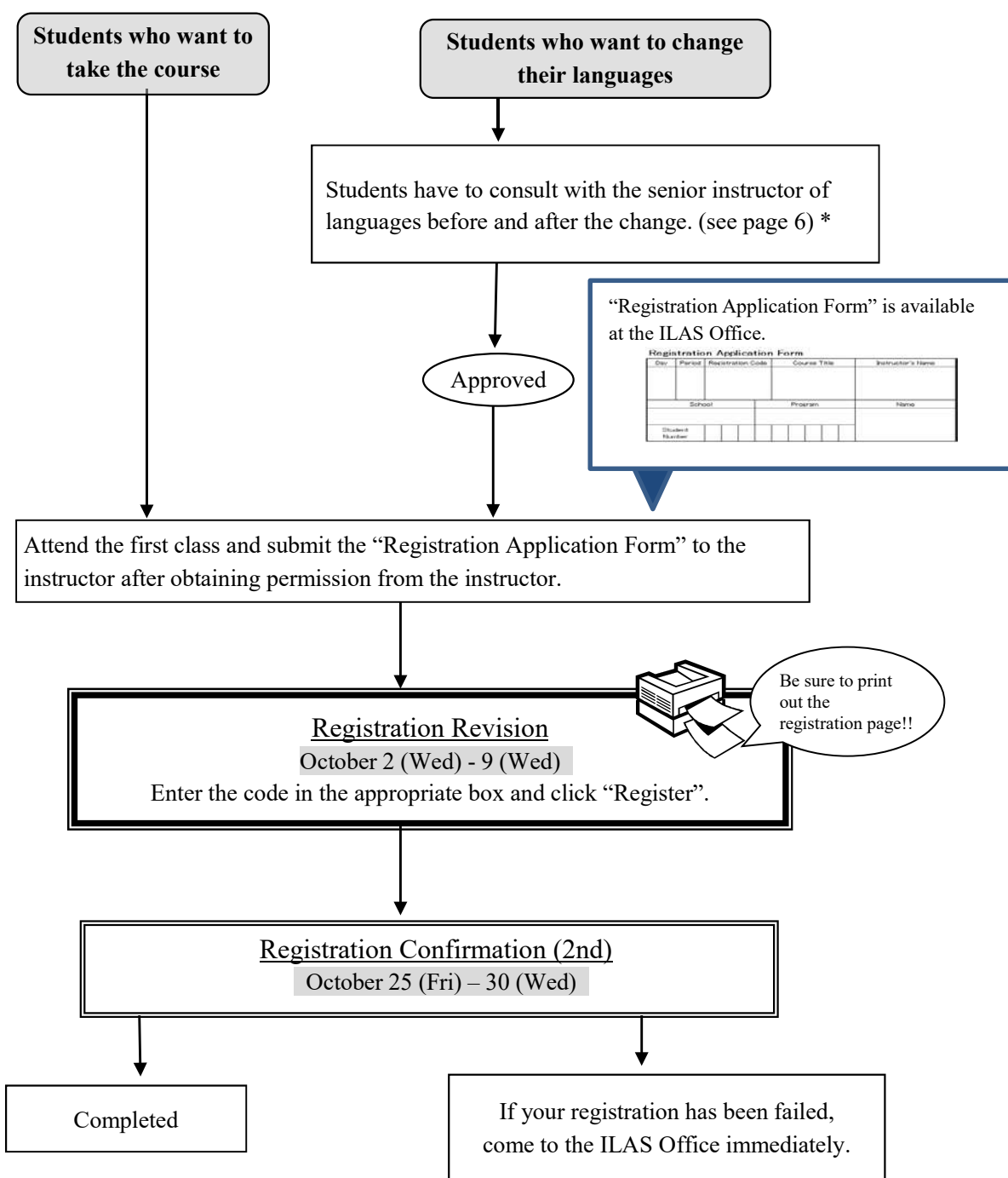
**School of Humanities/Letters, Law, Economics and Agricultural Sciences only:  
Tuesday 3rd period “Academic English Advanced 1”**

**School of Humanities/Letters, Law and Economics only:  
Tuesday 4th period “Academic English Advanced 3”**



**Basic General Education Courses: Language and Culture I**  
 : [German, French, Russian, Chinese, Spanish, Korean] 1, 2

**Basic General Education Courses: Language and Culture II**  
 : Advanced Japanese  
 : Elementary [Russian, Chinese] 2  
 : Intermediate [German, French, Russian, Chinese, Spanish, Korean] 2  
 : Advanced [German, Spanish, Korean] 2



\*About credits required for graduation, please consult with the school you belong to.

**Basic General Education Courses: Language and Culture I**  
**“Integrated Japanese 1”, “Japanese Language Seminar 1”,**  
**“Academic Japanese I / III / V”, “Business Japanese I / III”,**  
**Open Courses**

“Registration Application Form” is available at the ILAS Office.


Registration Application Form										
Day	Period	Registration Code	Course Title	Instructor's Name						
				School			Program		Name	
Student Number										

Attend the first class and submit the “Registration Application Form” to the instructor after obtaining permission from the instructor.

**Registration Revision**  
 October 2 (Wed) - 9 (Wed)

Enter the code in the appropriate box and click Register.

※For “Mathematics Tutorial Ia” and “Mathematics Tutorial Ib”, you can register for both courses simultaneously in Tuesday 4th period.



Be sure to print out the registration page!!

**Registration Confirmation (2nd)**  
 October 25 (Fri) – 30 (Wed)

Completed

If your registration has been failed, come to the ILAS Office immediately.

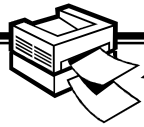
**Basic General Education Courses / Health and Sports Science:  
“Health and Sports Science: Practicum (Exercise and Sports II)”**

Attend the first class of the course and submit the “Exercise Course Card”.  
(See the box at the bottom for details.)

If you did not attend the first class,

Visit the Research Center of Health, Physical Fitness and Sports for course enrollment permission and submit the “Exercise Course Card” before the second class.

Registration Revision  
October 2 (Wed) – 9 (Wed)  
Click the appropriate day and period and then click “Register”.



Be sure to print out the registration page!!

Registration Confirmation (2nd)  
October 25 (Fri) – 30 (Wed)

Completed

If your registration has been failed, come to the ILAS Office immediately.

- 1) The course orientation will be held in the first week of the semester. Those who wish to take this course should gather in arena on the 2nd floor of the New Gymnasium in the General Sports Ground (Yamanoue).
- 2) For those who take the Practicum course for the first time, be sure to bring a face photo (4 cm height x 3 cm wide, write your name and student ID number on the back) and a black ballpoint pen since the “Exercise Course Card” will be issued in the first class.
- 3) **Be sure to register for the course online.**
- 4) Check “Check enrolled classes” via the website if the course has been registered.
- 5) The course withdrawal system is adopted. The submission deadline of a Notification of Course Withdrawal is **the end of 4th class**.

- **Basic Courses in Humanities and Social Sciences,**
- **Basic Courses in Natural Sciences,**
- **Liberal Education Courses in Humanities and Social Sciences,**
- **Liberal Education Courses in Natural Sciences,**
- **Liberal Education Courses in Interdisciplinary Fields,**
- **Basic General Education Courses: “Health and Sports Science: Lecture”**

Course Registration  
(see the front page for the period)

Click “Register class enrollments”.

※For “Special Mathematics Lecture (Introduction to Functional Analysis)”, click “**Register intensive class enrollments**”.



Be sure to print out the registration page!!

Registration Confirmation (1st)  
September 27 (Fri) - October 9 (Wed)

Click the “Check enrolled classes”.

The registered classes cannot be changed

“Registration Application Form” is available at the ILAS Office.

Registration Application Form				
Day	Period	Registration Code	Course Title	Instructor's Name
School		Program		Name
Student Number				

If you have failed or missed the registration,

Attend the first class and submit the “Registration Application Form” to the instructor after obtaining permission from the instructor.

Be sure to print out the registration page!!



Registration Revision  
October 2 (Wed) - 9 (Wed)

Click “Correct class enrollments”. Select an appropriate day and period and click “Register”.

※For “Special Lecture (Studium Generale I)” and “Special Mathematics Lecture (Introduction to Functional Analysis)”, click “**Correct intensive class enrollments**”.

Registration Confirmation (2nd)  
October 25 (Fri) – 30 (Wed)

Click “Check enrolled classes”.

Completed

If your registration has been failed, come to the ILAS Office immediately.

## V. Confirmation and Revision of Registered Courses

### 1. Registration Confirmation

Check the enrolled classes via the Nagoya University Portal within the period below.

Period	Contents	How to Confirm
<u>Registration Confirmation (1st)</u> September 27 (Fri) 9:00 a.m. – October 9 (Wed) 6:00 p.m.	The courses registered via the web before the semester begins	Using computers connected to the internet*  <u>Nagoya University user ID and Password</u> are necessary.
<u>Registration Confirmation (2nd)</u> October 25 (Fri) 9:00 a.m. – October 30 (Wed) 6:00 p.m.	All courses including the courses registered between October 2(Wed) to 9(Wed)	

\*Access to the NU Portal (<https://portal.nagoya-u.ac.jp/>) and login (p.7) with using your Nagoya University user ID. After logging in, you can confirm the registered courses from "Check enrolled classes".

#### Notes:

1. "Check enrolled classes" is computerized web registration result. For all registered courses, "Course Title", "Instructor's Name", and "Number of Credits" are indicated.
2. **You cannot take the courses which are not on the "Class Enrollment Check" and you are not eligible to take the examinations.** In addition, even if a course is on the "Check enrolled classes" screen, you may not be able to take the course nor the examination without the instructor's permission if the course requires instructor's permission.
3. When you see the "Check enrolled classes", please confirm it with the registration page you have printed out when you registered for the course.
4. If you find any mistakes on the enrolled classes, you need to modify it by the deadline. If you have any questions regarding "Course Error" or "Course Warning" shown on the notes section of that screen, visit the office in charge; for Liberal Arts and Sciences courses visit the ILAS Office and for specified courses ask the Student Affair Section in your school. For more information, please refer to "Contact Information for Course Registration" on the backside of the cover page.

**Even if you find a mistake on your registration just before the final exam, it is too late to modify the registration. You must check the course titles and instructor's names by clicking "Check enrolled classes" when registering courses.**



## 2. Class Enrollment Check – Errors and Correction Methods

Example of errors and these correction methods are provided below. For the details, read the right side of the column “Notes” on the “Class Enrollment Check- example” on the next page.

◇Correct the class of which “Registration Code”, “Course Name”, “Name of Instructor”, and “Number of Credits” is listed in the day and period section. **It is not permitted to change once your class is fixed.**

◇How to correct the errors on following page (example)

<b>1. Example of the errors (warnings) on the “day” and “period” part</b>	
<b>(a) W-5: Warning! Credits not recognized (Wed. Intensive courses)</b>	
Cause of Error	This is a warning that the course "Special Mathematics Lecture" will not be counted as credits required for graduation.
Correction Method	It is not necessary to revise the course registration for the course. The class can be taken as is.
<b>2. Examples of errors displayed in the Registration Error section</b>	
<b>(b) E-3: Error related to multiple classes not registered (Fri. 3rd period)</b>	
Cause of Error	An error was generated because you did not register for the part of a multiple-class-a-week course held in Friday 4th period ("Introduction to Civil Engineering and Architecture" is held in 3rd and 4th period on Friday).
Correction Method	It is necessary to add a course held in Friday 3rd and 4th period.
<b>(c) Disapproved due to adjustment (Wed. 3rd period)</b>	
Cause of Error	As a result of the adjustments for the number of students, the registration was disapproved.
Correction Method	Choose another class to take, obtain permission from the instructor, and make an additional registration.
<b>(d) E-I: Disapproved registration (Thu. 2nd period)</b>	
Cause of Error	An error was generated since the instructor disapproved the registration.
Correction Method	Consult with the ILAS Office if the registration has been rejected even though you received permission from the instructor.
<b>(e) E-K: Error in designation (Tue. 4th period)</b>	
Cause of Error	An error was generated since you tried to register for a course which is not designated.
Correction Method	Follow the same correction method as explained in (c) above.
<b>(f) E-B: Wrong registration code (Day and Period not clear)</b>	
Cause of Error	This error appeared since the registration code 0025684 does not exist.
Correction Method	Follow the same correction method as explained in (c) above.

### 3. Example of Errors

	Mon.	Tue.	Wed.	Thu.	Fri.	Notes
1		00621XXX Japanese Language Seminar(Communication) I XX XX 2.0 credits			00621XXX Japanese Language Seminar(Communication) I XX XX 2.0 credits	E-1: Error related to the university grade You cannot take the course in your grade. The registration will be deleted. E-2: Error related to school or department affiliation The course is not for the school you belong to. The registration will be deleted. E-3: Error related to multiple classes per week Classes for the course are held several times a week. The registration will be deleted. E-6: Error related to full-year course This is a full-year course. The registration will be deleted. E-B: Wrong registration code This is a wrong registration code. The registration will be deleted. E-C: Overlapping classes in the same period More than one course was tried to be registered in the same period. The registration will be deleted. E-D: Does not match to the timetable The course is not offered in the period. The registration will be deleted. E-F: Class semester error The course is not offered this semester. The registration will be deleted. E-G: The same registration code has been registered This registration code is already registered. The registration will be deleted. E-H: Special registration application error You have already taken this course before. The registration will be deleted. E-I: Disapproved registration Your application to register for this course was disapproved by the instructor. The registration will be deleted. E-J: Upper limit registration error More courses than permitted for this semester were tried to be registered. The registration will be deleted. E-K : Error in designation
2	00612XX Linear Algebra I XX XX 2.0 credits	08213XX Outline of Department of Physical Science and Engineering XX XX 2.0 credits			00652XX Health and Sports Science: Lecture XX XX 2.0 credits	E-L: Order of preference error There was a mistake in entering the order of preference. The registration will be deleted. E-M: Automatic registration error It is not possible to register for this course. The registration will be deleted. E-N: Wrong application error The application was made incorrectly. The registration will be deleted. W-1 Warning! Auditing courses offered by another school This is an auditing course for another school. Please confirm this. W-5 Warning! Credits not recognized The credits cannot be recognized for graduation credits. Please confirm this. W-7 Warning! Exceeding the maximum number of credits There is an error against the maximum number of foreign language credits allowed. Please confirm this.
3	00613XX Fundamentals of Biology I XX XX 2.0 credits	00623XX Academic English Advanced I XX XX 2.0 credits	00632XX First Year Seminar A XX XX 2.0 credits			
4		00824XX Immigration in Japan - Law, Policy, and Society XX XX 2.0 credits		00643XX Biotechnology XX XX 2.0 credits	00654XX Comparative Studies of Cultures XX XX 2.0 credits	
5	00615XX Past and Present of Democracy XX XX 2.0 credits	00225XX French I XX XX 1.5 credits	(e) Warning! Credits not recognized	00645XX Calculus I XX XX 2.0 credits	00255XX French 2 XX XX 1.5 credits	
Intensive courses			00635XXX W-5 Special Mathematics Lecture (Introduction to Functional Analysis) XX XX 2.0 credits			This course is not designated to register. The registration will be deleted. E-L: Order of preference error There was a mistake in entering the order of preference. The registration will be deleted. E-M: Automatic registration error It is not possible to register for this course. The registration will be deleted. E-N: Wrong application error The application was made incorrectly. The registration will be deleted. W-1 Warning! Auditing courses offered by another school This is an auditing course for another school. Please confirm this. W-5 Warning! Credits not recognized The credits cannot be recognized for graduation credits. Please confirm this. W-7 Warning! Exceeding the maximum number of credits There is an error against the maximum number of foreign language credits allowed. Please confirm this.
Special Registration	(e) Disapproved due to adjustment	(b) Multiple classes not registered	(e) Not designated	(f) Wrong registration code	(d) E-I Disapproved registration	
Error	00133XX Wed.3 Information Literacy XX XX 2.0 credits	00851XX Fri.3 E-3 Introduction to Civil Engineering and Architecture XX XX 2.0 credits	00621XX Tue. 4 E-K Mathematics Tutorial Ia XX XX 2.0 credits	0025684 E-B	00542XX Thu.2 E-I First Year Seminar B XX XX 2.0 credits	<ul style="list-style-type: none"> <li>*"E-O" is an "Error". The registration will be deleted. If you wish to register for the course, you need to do the registration again.</li> <li>*"W-O" is a "Warning".</li> </ul>

**Registration Application Form**

Day	Period	Registration Code	Course Title	Instructor's Name
School		Program		Name
Student Number				

cut here

cut here

**Registration Application Form**

Day	Period	Registration Code	Course Title	Instructor's Name
School		Program		Name
Student Number				

cut here

cut here

**Registration Application Form**

Day	Period	Registration Code	Course Title	Instructor's Name
School		Program		Name
Student Number				

cut here

cut here

**Registration Application Form**

Day	Period	Registration Code	Course Title	Instructor's Name
School		Program		Name
Student Number				

cut here

cut here

**Registration Application Form**

Day	Period	Registration Code	Course Title	Instructor's Name
School		Program		Name
Student Number				

cut here